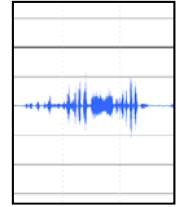




Department of Occlusal and Oral Functional Rehabilitation

Graduate School of Medicine, Dentistry and Pharmaceutical Sciences Okayama University



■ Introduction

Department of Occlusal and Oral Functional Rehabilitation aims to improve and support the Quality of Life through basic and clinical research and also clinical activities. The research area covers stomatognathic function, TMD, bioengineering, implantology, oral pathology, maxillofacial prosthetic dentistry, speech function, and other related fields.



■ Research Groups



Stomatognathic Function Research Group

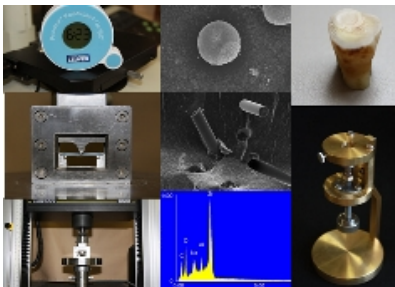
RESEARCH FOCUS: This research group focuses on the stomatognathic function, i.e. Temporomandibular Disorders (TMD), Sleep, Mastication, Swallow, Occlusal Dysesthesia.

RESEARCH MODALITY: Biomechanics, EMG, Food Particle Analysis, Phonetics



Biological Research Group

RESEARCH FOCUS: 1) Behavioral and biochemical study on oral rehabilitation using removable prosthesis, 2) Regulation of bone resorption under denture base, and 3) Development of high performance biomaterials

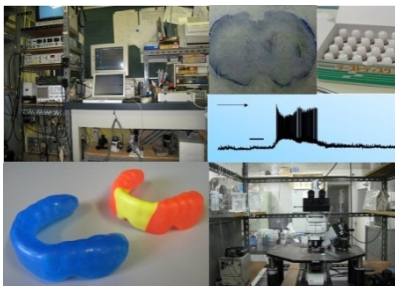


Dental Materials Group

Form an Alliance with Department of Biomaterials

RESEARCH FOCUS: The principal aim of the group is to promote translational research between academia, industry, and the dental practitioner. We focus on the properties or performance of dental materials or the reaction of host tissues to materials.

RESEARCH MODALITY: Physical and Mechanical properties, Surface image analysis, Biocompatibility



Oral Physiology Group

RESEARCH FOCUS: This research group is intended to elucidate the physiological functions of saliva secretion, jaw movement and oral sensations. **RESEARCH MODALITY:** We use electrophysiological experiments techniques, immunohistochemistry experiments procedures and behavioral scientific experiment procedures.

Department of Occlusal and Oral Functional Rehabilitation

2-5-1 Shikata-cho, Kita-ku, Okayama 700-8525, JAPAN

Tel: +81-86-235-6685 Fax: +81-86-235-6689 contact us: kogo.info@cc.okayama-u.ac.jp

PROSTHODONTICS