

Department of Pathology (Oncology)

Clinicopathology and Molecular Research

Research Interests:

Lymphoma and lymphoproliferative disorder (LPD)s

1. Lymphoma

Diagnosis: 1300 cases of lymphomas/year

Research: We focus on lymphoma, especially on **follicular lymphoma (FL)**.

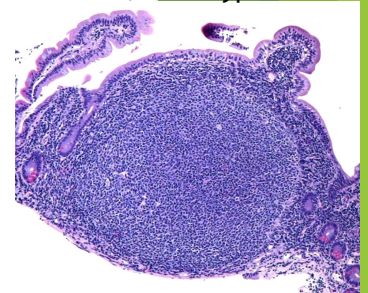
We first discovered "**duodenal-type FL** (WHO classification 2016)", a distinct and very interesting subtype of FL. We have been reported many papers on duodenal FL from clinicopathological and molecular aspects. **Aggressive transformation of FL** is also our major interest. We are also interested in **adult T-cell leukemia/lymphoma (ATLL)**, lymphoma involving immune-privilege legions and others.

Research!

2. IgG4-related disease and other LPDs

IgG4-related disease is a unique systemic disorder first discovered in 21st century. We've been reported many articles on IgG4-related disease and other LPDs including **multicentric Castleman's disease** and **TAFRO syndrome** (newly established LPD causing thrombocytopenia, anasarca, fever, reticulin fibrosis and organomegaly).

Duodenal-type FL



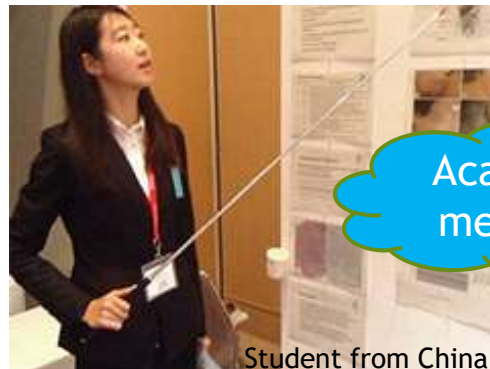
Join us!



Students from China and Egypt

Staffs:

Tadashi YOSHINO, M.D., Ph.D.
Eiko HAYASHI, M.D., Ph.D.
Mai TAKEUCHI, M.D., Ph.D.
Takuro IGAWA, M.D., Ph.D.



Student from China

Academic meeting!

International Educational Programs

We have been accepting students from

China Medical University (China)
Dalian Medical University (China)
Jilin University (China)
Mansoura University (Egypt) and more...

Find out more!

Our door is always **OPEN!**



<http://www.okayama-u.ac.jp/user/path>

Contact to: Tadashi YOSHINO, M.D., Ph.D. (Professor)
A member of International Lymphoma Study Group (ILSG)
Vice president of Okayama University
Phone: +81-86-235-7150
E-mail: yoshino@md.okayama-u.ac.jp