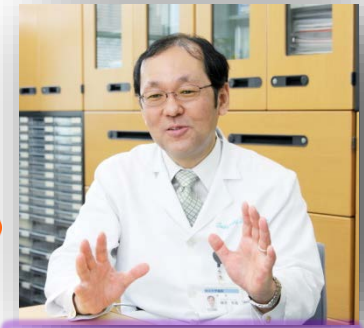
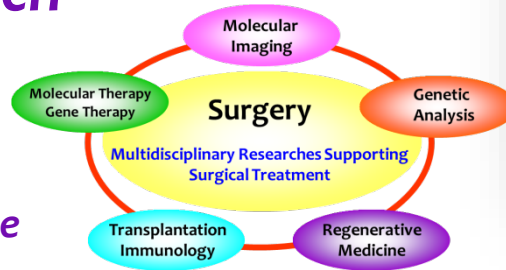


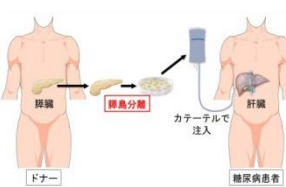
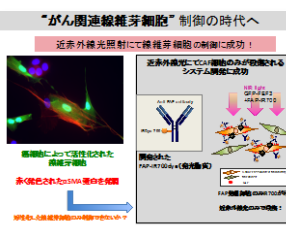
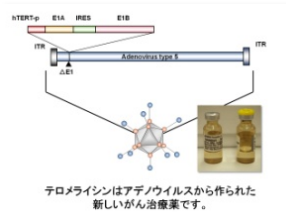
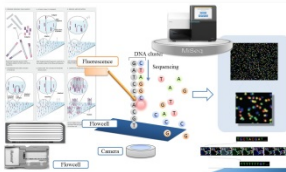
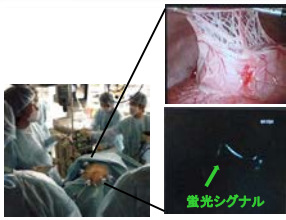
Let's Join Us for Clinical-Oriented Dynamic Research

- Cancer Diagnostics
- Cancer Therapy
- Transplantation
- Regenerative Medicine



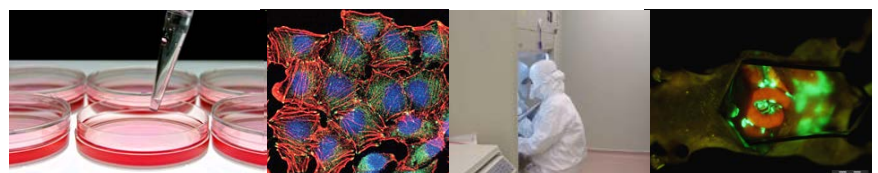
Professor
Toshiyoshi Fujiwara, MD, PhD

Research Projects



The Department of Gastroenterological Surgery provides exceptional patient care and outstanding surgical education through innovative basic science and clinical research.

1. Gene therapy and molecular targeted therapy for cancer
2. Investigation of novel target therapy for cancer microenvironment (cancer-associated fibroblasts)
3. Molecular and fluorescent imaging for cancer
4. Development of surgical navigation system
5. Genetic profiling of gastrointestinal neoplasm / Genome Wide Association Study: GWAS / Genetic analysis for chemosensitivity
6. Minimally invasive therapy (MIT) (laparoscopic surgery, robotic surgery) for gastrointestinal disease
7. Peptide cancer vaccines for hepato-biliary-pancreatic neoplasms
8. Clinical research and trials of chemotherapy
9. Deceased and living donor liver transplantation
10. Pancreas islet cell transplantation for diabetes
11. Regenerative medicine for liver and pancreas



Contact Information :

Toshiyoshi Fujiwara, Department of Gastroenterological Surgery (Clinical Research Building 8 floor)
Okayama University Graduate School of Medicine, Dentistry and Pharmaceutical Sciences
2-5-1 Shikata-cho, Kita-ku, Okayama 700-8558, Japan
Tel : 81-86-235-7255 fax : 81-86-221-8775
URL: <http://www.ges-okayama-u.com/english.html>