

Department of Clinical Pharmacy

【Research Overview】

We perform clinical pharmaceutical research into the optimal medications for patients and provide education on basic and clinical pharmacology to pharmacy, medical, dental, and nursing students, as well as education on clinical pharmacology and medical pharmacy to graduate students, residents, and staff. With regard to research, we conduct a diverse range of basic and clinical drug studies, as described below.

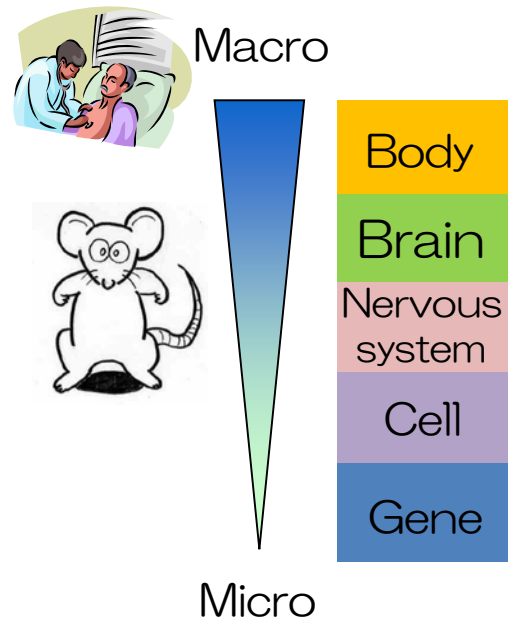
【Research Project】

We consider that neuroscience remains one of the most intensively investigated and exciting areas of biological science. Understanding the functions and biology of the brain, as well as the bases for learning, memory, and cognition, have emerged as major goals of contemporary research. Such an understanding of the brain's molecular mechanisms could lead to the development of therapies that improve neuronal functions.

Our pharmacy faculty delivers novel therapies that improve human health, particularly during the treatment of mental disorders and cancer. Furthermore, we research the adverse events caused by medical devices. Our pharmacy also collaborates with other academic departments to conduct cutting-edge translational research into pervasive health challenges.

1. Development of an animal model and investigation of the pathological mechanisms responsible for anticancer drug-induced cognitive impairment and psychiatric disorders
2. Elucidation of motivation and reward mechanisms, development of experimental methods, and assessment of the motivational properties of psychoactive drugs
3. Development of an animal model and investigation of the pathological mechanism responsible for treatment-resistant depression
4. Investigation of the pathological mechanisms responsible for psychological aspects of inflammatory conditions

【Our Strategy】



Prof. Toshiaki Sendo, PhD
(E-mail: sendou@md.okayama-u.ac.jp)

Department of Clinical Pharmacy

Okayama University Graduate School Medicine, Dentistry and Pharmaceutical Sciences