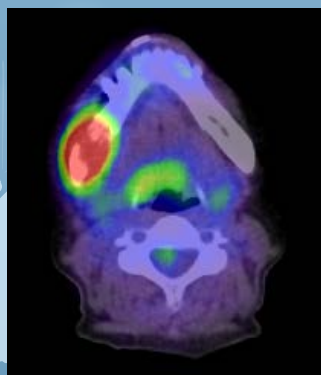
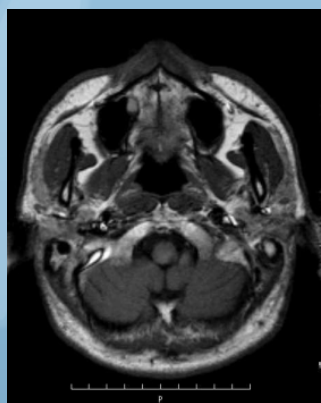


Department of Oral and Maxillofacial Radiology

Carve out the dental radiation field on
the theme of imaging diagnosis and
conservative oral cancer therapy



In diagnostic imaging of dental radiology, there are many kinds of the modalities, and improvement of their quality are remarkable. The modalities include the periapical radiography, panoramic radiography, medical CT, ultrasound, MRI, dental cone-beam CT, PET and others. In addition, teleradiology has been progressed by imaging digitization. These are linked closely with the establishment and progress of IT in medicine. These advanced diagnostic imaging leads to demand the improvement of the diagnostic ability of an expert in this field. Furthermore, our department treats the oral cancer using conservative treatment with radiotherapy (including brachytherapy), chemotherapy and so on, since the preservation of functionality and aesthetics are important.

Thus, our department is advancing studies for imaging diagnosis and radiotherapy of oral and maxillofacial region as following themes.

The main research themes

1. Research on conservative therapy of oral cancer
2. Research on MRI diffusion weighted image of oral lesion
3. Research on qualitative diagnosis ability by dynamic contrast enhanced MRI of oral and maxillofacial region
4. Study on dental MRI development
5. Development of drug discovery in oral cancer
6. Molecular imaging in oral cancer
7. Research for the forensic dentistry
8. Study of educational effects using clicker audience response system (clicker)

Okayama University Graduate School of Medicine, Dentistry and Pharmaceutical Sciences,
Division of Biopathological Sciences, Oral and Maxillofacial Radiology (Jun-ichi ASAUMI)
2-5-1, Shikata-cho , Kita-ku , Okayama-shi, JAPAN
Tel : +81-86-235-6705 Fax : +81-86-235-6709
E-mail : asaumi@md.okayama-u.ac.jp