

生体機能再生・再建学講座 眼科学分野

Department of Ophthalmology

臨床眼科学を背景にした臨床・基礎研究

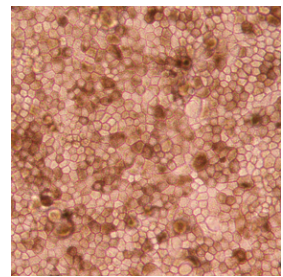
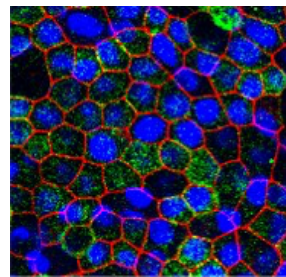


Physician-Scientistの養成

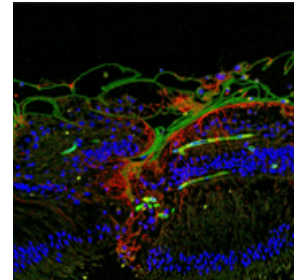
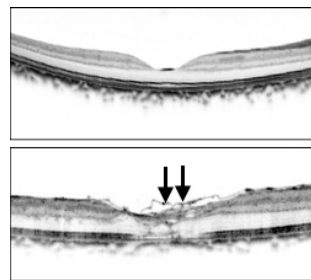
岡山大学眼科では、網膜硝子体、緑内障、斜視、ぶどう膜の各分野について、病態の解明、新しい治療法の開発を積極的に行なっています。大学院ではこれらを目的とした臨床研究と基礎研究に取り組んでいます。大学院修了後には国内外の研究機関への留学も推奨しています。眼科医として臨床医学を研鑽するとともに、研究の経験を積み、将来は Physician-Scientistとして活躍してもらいたいと考えています。

〈主な研究テーマ〉

- 1) iPS網膜色素上皮細胞を用いた、難治性網膜疾患の病態解明
- 2) 難治性網膜疾患に対する、新たな硝子体手術手技の開発
- 3) 緑内障進行の危険因子の解析
- 4) 斜視関連遺伝子の探索
- 5) 眼球運動、両眼視機能の研究



iPS網膜色素上皮を用いた基礎研究



難治性黄斑円孔に対する新しい手術手技の開発

連絡先／岡山大学大学院医歯薬学総合研究科 生体機能再生・再建学講座 眼科学分野

〒700-8558 岡山市北区鹿田町2-5-1

Tel.086-235-7297 (医局長：塩出)

E-mail: ophth@cc.okayama-u.ac.jp

URL: <http://okayama-u-ophth.jp/>

Department of Ophthalmology

Fundamental and clinical studies in the field of clinical ophthalmology



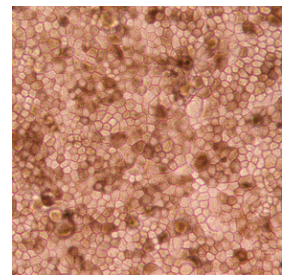
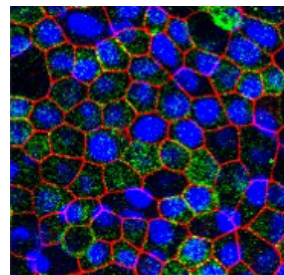
Physician-Scientists

In the Department of Ophthalmology at Okayama University, we are actively working toward developing new treatments and elucidating various aspects of retina–vitreous disease, glaucoma, uveal disease, strabismus, and amblyopia. We address fundamental and clinical studies for the abovementioned purposes.

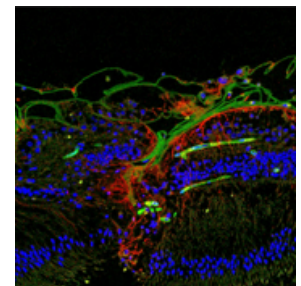
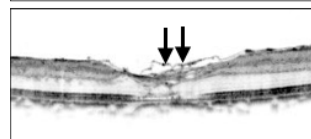
We suggest overseas education for students after completing graduation from our university. We want you to become a physician-scientist who can provide patient care and conduct research as an ophthalmologist.

< Main study theme >

- 1) Elucidation of the pathophysiology of refractory retinal diseases using iPS retinal pigment epithelial cells
- 2) Development of new procedure of vitreous surgery for refractory retinal disease
- 3) Analysis of risk factor in glaucoma
- 4) Gene research on strabismus
- 5) Study of proprioception in extraocular muscles



Fundamental research using iPS-RPE cells



Development of new surgical technique for refractory macular hole

Contact us

Department of Ophthalmology, Division of Science of Functional Recovery and Reconstruction, Graduate School of Medicine, Dentistry and Pharmaceutical Sciences, Okayama University,

2-5-1, Shikata-cho, Kita-ku, Okayama 700-8558, Japan

Tel. +81-86-235-7297; E-mail: ophth@cc.okayama-u.ac.jp

E-mail: ophth@cc.okayama-u.ac.jp

URL: <http://okayama-u-ophth.jp/>